

SME business confidence up for a fourth quarter – consistent with increases seen by larger firms. Confidence is finally gaining traction to support business activity, with conditions rising to their highest since mid-2011 – but remain soft. SME's continue to outperform larger firms in number of industries, particularly in the services sectors, but smaller retailers are suffering relatively more. Forward indicators better, but still very subdued, implying soft near-term sales.

- SME business confidence saw its fourth consecutive rise in the December quarter, reaching its highest level since 2010. The increase was consistent with what we have seen from larger firms in the quarter, suggesting that lower interest rates and (to a lesser extent) AUD are having the desired impact on the economy ([NAB Quarterly Business Survey](#)). Consistent with this, property/construction and finance/business firms are the most confident, reflecting a pick up in leading indicators of construction activity. Confidence rose the most, and is now highest, in Western Australia despite anticipated headwinds from mining investment. Confidence improved across all tiers of SMEs, but mid-tier SME's are the most confident by a significant margin.
- SME business conditions rose strongly in the December quarter, but the index is still pointing to relatively soft business activity. Conditions at high-tier firms were unchanged, while low and mid-tier firms recorded a significant improvement and are now outperforming their larger counterparts. Cash flows results at very small and mid-tier SMEs recovered from alarmingly low levels in Q3.
- SME conditions still vary widely between industries, with property and financial services, health, business services and accommodation, cafes & restaurants all holding up relatively well – and outperforming their larger counterparts. Transport, retail and (surprisingly) construction were the weakest industries for the quarter – retail was the only industry to significantly under perform against larger firms. Business conditions improved across all states, but remain very weak in SA and Qld and strongest in WA.
- Forward orders improved, but remain subdued, while employment conditions continue to be weak. This suggests little likelihood of any near-term strengthening in sales.
- Responses to a special question suggest that in the past twelve months, more than half of SMEs developed or improved their websites to improve competitiveness, while a similar proportion looked to develop new products. Price discounting also remains a popular strategy, possibly helping to limiting down stream price pressures.

Key quarterly business statistics**

	2012q4	2013q3	2013q4		2012q4	2013q3	2013q4
	<i>Net balance</i>				<i>Net balance</i>		
SME business confidence	-8	6	9	SME trading conditions	-4	-4	5
Low	-7	4	5	Low	-10	-15	7
Mid	-8	8	16	Mid	-8	-8	9
High	-9	4	6	High	2	5	3
SME business conditions	-7	-7	-1	SME profitability	-12	-12	-4
Low	-10	-14	1	Low	-14	-20	1
Mid	-10	-10	3	Mid	-13	-16	-2
High	-3	-2	-2	High	-10	-6	-6
SME cash flows (n.s.a.)	-2	-8	3	SME employment	-6	-6	-3
Low	-4	-20	4	Low	-6	-8	-4
Mid	-10	-12	4	Mid	-11	-6	0
High	5	1	3	High	-2	-4	-5

Low: \$2-3m p.a. Mid: \$3-5m p.a. High: \$5-10m p.a.

** Data are seasonally adjusted by NAB, except SME cash flow (insufficient time series available). All data are net balance indices. Fieldwork for this Survey conducted from 25 Nov to 13 Dec 2013 covering almost 700 SME firms across the non-farm business sector.

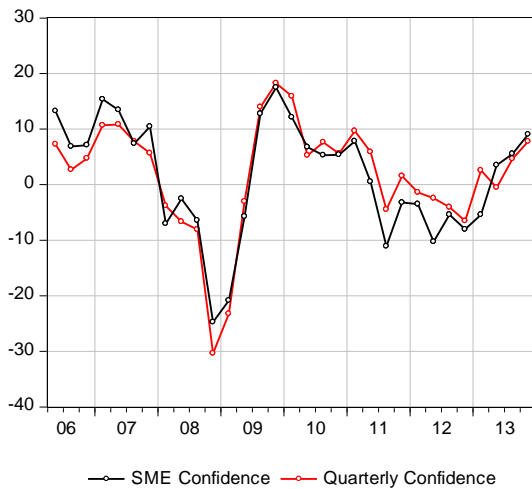
For more information contact:
Alan Oster, Chief Economist
(03) 8634 2927 0414 444 652

Next release:
11 March 2014 (February Monthly)

Analysis

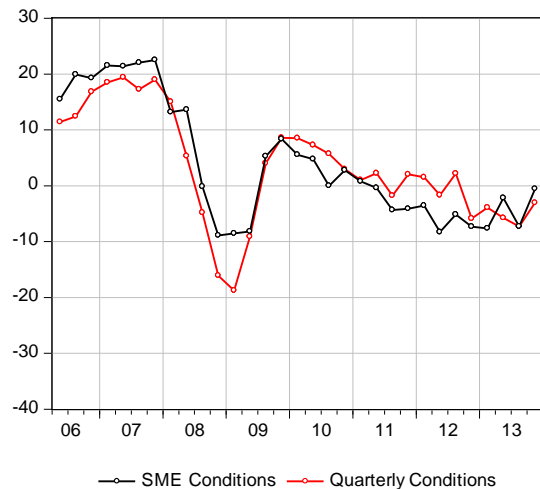
Confidence ticked up in line with larger firms

Business confidence (net bal., s.a.), SME & quarterly



Conditions lift, but remain at subdued levels

Business conditions (net bal., s.a.), SME & quarterly



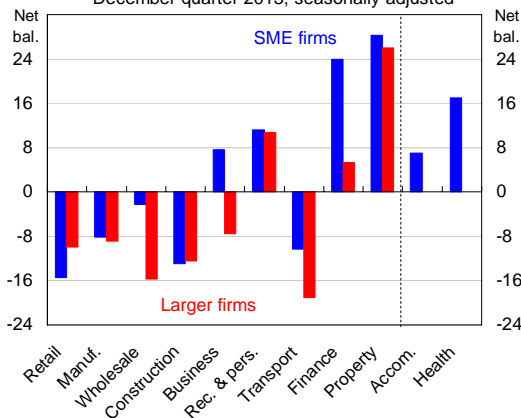
SME business confidence rose for the fourth consecutive quarter in the December quarter, up 3 points to +9 index points, building on the post-election exuberance. At +9 points, the confidence index has reached its highest level since early 2010 and is well above the series average of +1 point since mid-2006. Property, construction and business/financial services firms remained the most optimistic, reflecting the good performance of property markets in 2013 – supported by the lower interest rate environment. Political factors also appear to be becoming much less of a concern for SMEs. Confidence of larger firms kept pace with SMEs, but the latter remain marginally more confident – possibly reflecting greater sensitivity to the AUD and interest rates (larger firms may be more likely to hedge their exposures). Mid-tier firms appear to have been the most confident in the quarter, although both high and low-tier firms recorded modest improvements in confidence.

SME business conditions ticked up, but continue to trail confidence by a significant margin and point to persistently subdued business activity. Conditions were up 6 points to -1 points, which is the highest level since mid-2011, but still 5 points below the series average of +4 points (since mid-2006). Conditions improved or were unchanged for most industries in the quarter, but transport and (surprisingly) construction were the only exceptions. Similar to trends in confidence, conditions facing property/financial services are the most positive, but the limited pass-through of building/finance approvals to actual construction activity has kept construction conditions soft. However, conditions are currently the weakest in retail, despite signs of a more positive holiday trading period compared to recent years. Business conditions of SMEs rose by more than their larger counterparts and are now higher, although both remain subdued.

SME service firms out performing their larger counterparts

Business Conditions

December quarter 2013; seasonally adjusted



A comparison of industry conditions for SMEs and larger sized firms (taken from NAB's Quarterly Business Survey) suggests that there has been a growing divide between large and small firms in a handful of industries, although smaller firms appear to be reporting better conditions overall. The largest disparities are occurring in business/finance services and transport and wholesale, where smaller firms are performing much better. The only industry where larger firms are reporting better conditions than their smaller counterparts is in retail – one of the worst performers overall.

Analysis (cont.)

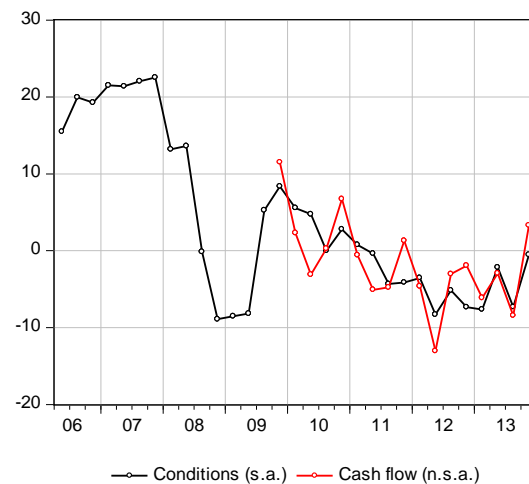
Profits, trading conditions and employment all rose

SME business conditions components (net bal., s.a.)



Cash flows better, but still soft

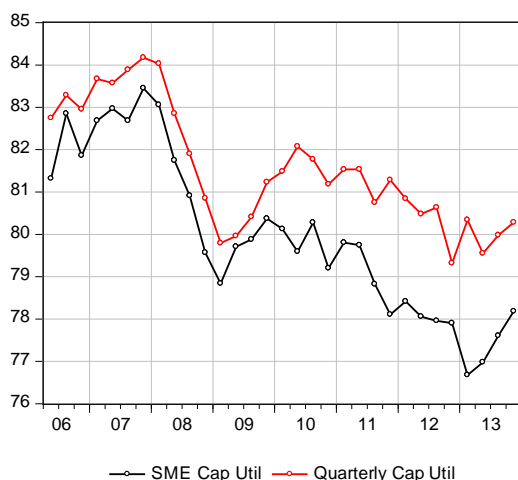
SME business conditions & cash flow (net bal.)



The marginal improvement in business conditions reflected strong rises in trading conditions and profitability, while employment conditions showed a slightly more modest increase. Additionally, SME cash flows (not seasonally adjusted) improved in the December quarter, more than unwinding a notable deterioration in the previous quarter.

Utilised capacity increases but remains at very low level

Capacity utilisation (per cent, s.a.), SME & quarterly



Orders stop contracting, but suggest little to no growth

Forward orders (net bal., s.a.), SME & quarterly

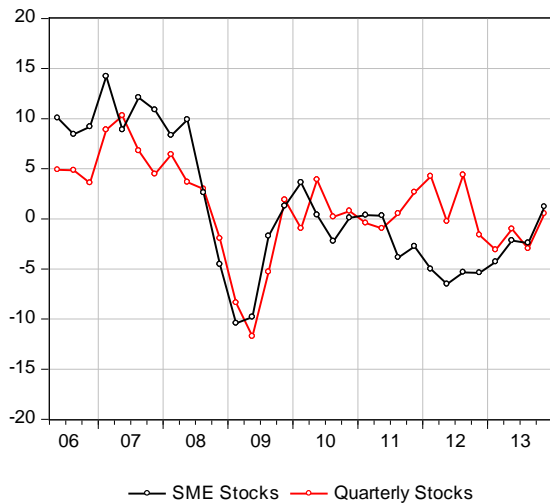


Capacity utilisation rose to 78.2% in the December quarter, up from 77.6%. Despite the rise, utilisation is still well below the series average of 80.0% since mid-2006, and significantly below the level of utilised capacity of larger firms (80.3%). In the quarter, solid increases in capacity utilisation of low-tier (up 2.7 pts to 79.1%) and mid-tier firms (up 1.7 pts to 78.3%) were partly offset by a decline in utilised capacity of high-tier firms (down 0.8 pts to 77.9%). Across industries, capacity utilisation was very high in health services (86.3%), as well as business services (85.1%) and financial services (83.4%), while it was very low in manufacturing (74.1%) and accommodation, cafes & restaurants (74.5%). Forward orders of SMEs improved in the quarter, rising 8 points to 0 points, suggesting little-to-no growth in output over the coming quarter. The improvement in the orders index was largely concentrated in retail and property, although at -3 index points for retail orders, this still suggests a contraction in sales for the industry. Orders are by far the strongest for property (+25). Orders are still very weak for transport and manufacturing, despite a modest improvement in the latter in the month.

Analysis (cont.)

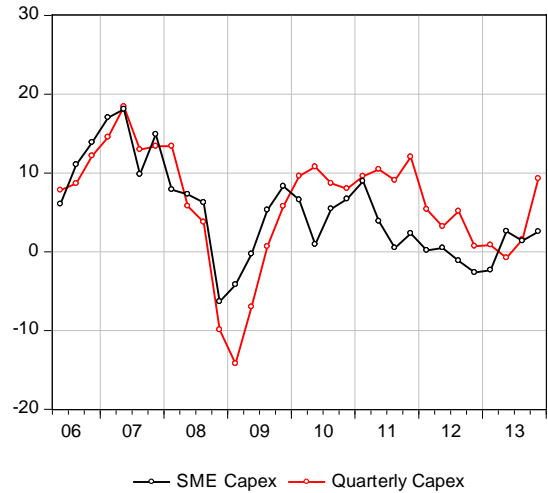
De-stocking may have ended?

Stocks (net bal., s.a.), SME & quarterly



Investment activity lagging behind larger firms

Capital expenditure (net bal., s.a.), SME & quarterly

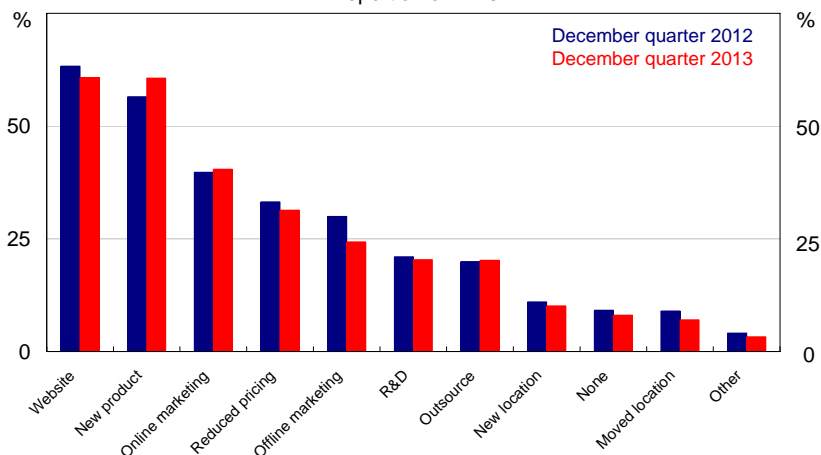


The SME stocks index was up 3 points to 1 index point in the December quarter, similar to the change in stocks of larger firms over the same period. The positive reading for SME stocks – the first since mid-2011 – implies a moderate build in inventories in the quarter, which could signal that a broad spectrum of firms are becoming more confident in the demand outlook. The stocks index is now close to a four year high. Capital expenditure ticked up in the December quarter (excludes mining), largely unwinding the pullback in the September quarter, lifting the index close to the two year high recorded in the June quarter. However, investment spending of smaller firms is being outstripped by larger firms, which showed surprising strength in Q4.

A majority of firms increasing their online presence and developing new products to boost their competitiveness in the market

Strategies employed over past 12 months to improve competitiveness

Proportion of firms*

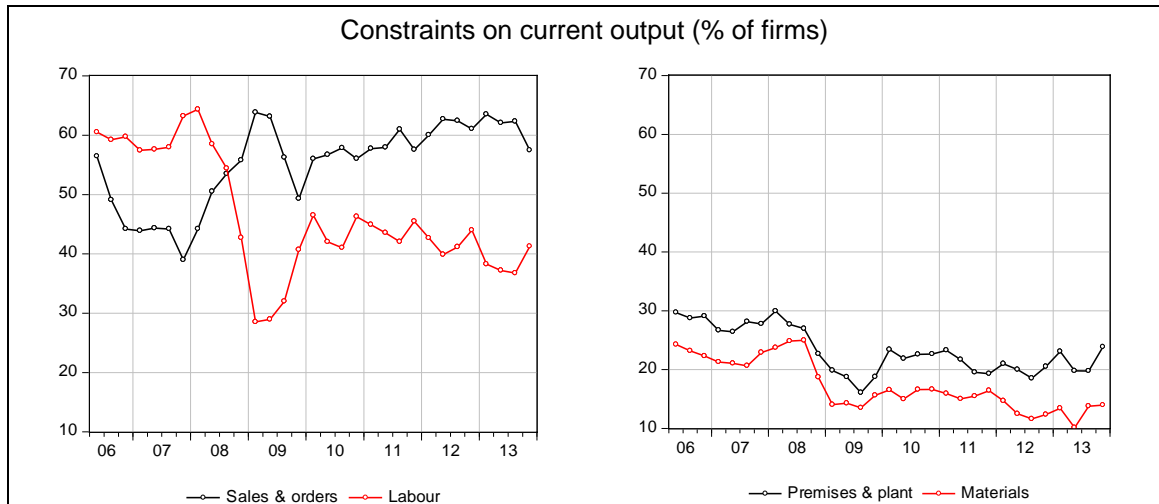


* Multiple responses allowed; will not sum to 100%
Source: NAB Quarterly SME Survey

In the December quarter SME Survey, we again asked firms whether they had employed any new strategies over the past 12 months in an attempt to improve competitiveness in the market. The outcomes suggest a degree of consistency in how firms are reacting to competitive pressures, although new product development became noticeably more common, while less are focussing on 'offline' marketing. The heavy focus on creating an online presence (over 50%) is consistent with firms having less of a focus on the (somewhat more disruptive) strategies of moving (or establishing new) locations.

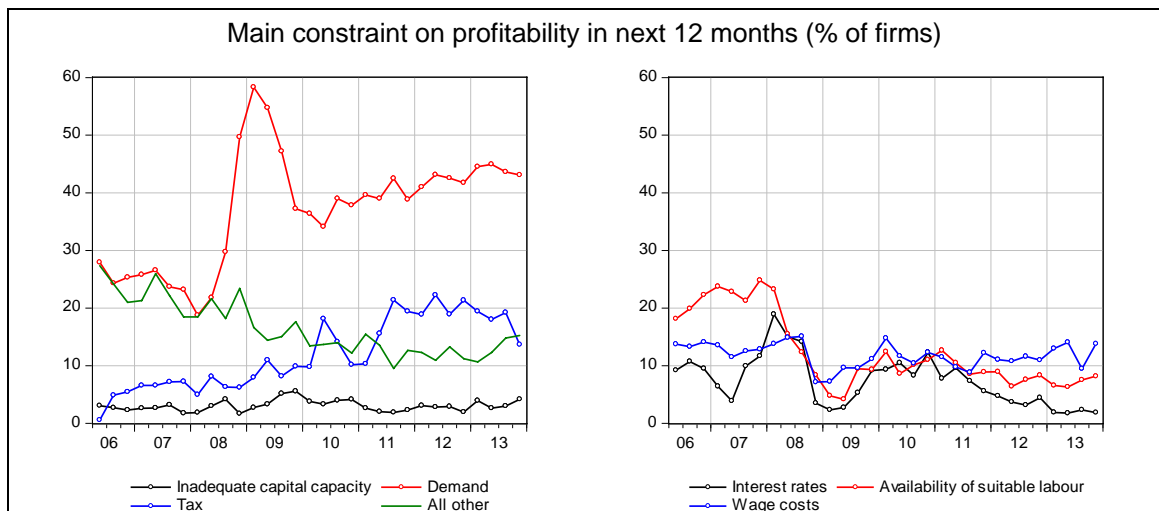
Analysis (cont.)

Demand is the biggest constraint on output, labour availability still good



Despite a reported rise in trading conditions for the quarter, demand (sales and orders) continue to be the major factor constraining SME output. However, the proportion of firms reporting demand as a constraint dipped to its smallest share in three years (57.5%) – consistent with that reported by larger firms. The availability of labour has also been a concern for SMEs, but the proportion reporting it as a constraint remains at low levels relative to the pre-GFC period – consistent with the soft labour market and weak wages growth. Labour availability appears to be more of an issue for SMEs than for their larger counterparts. The labour market deteriorated further in late 2013 and we expect that headwinds from the elevated AUD and impending decline in (labour intensive) mining investment will keep conditions difficult for a while yet. Labour availability appears fairly good for all firm sizes compared to pre-GFC levels. The importance of premises & plant and material both edged up, but remain low overall.

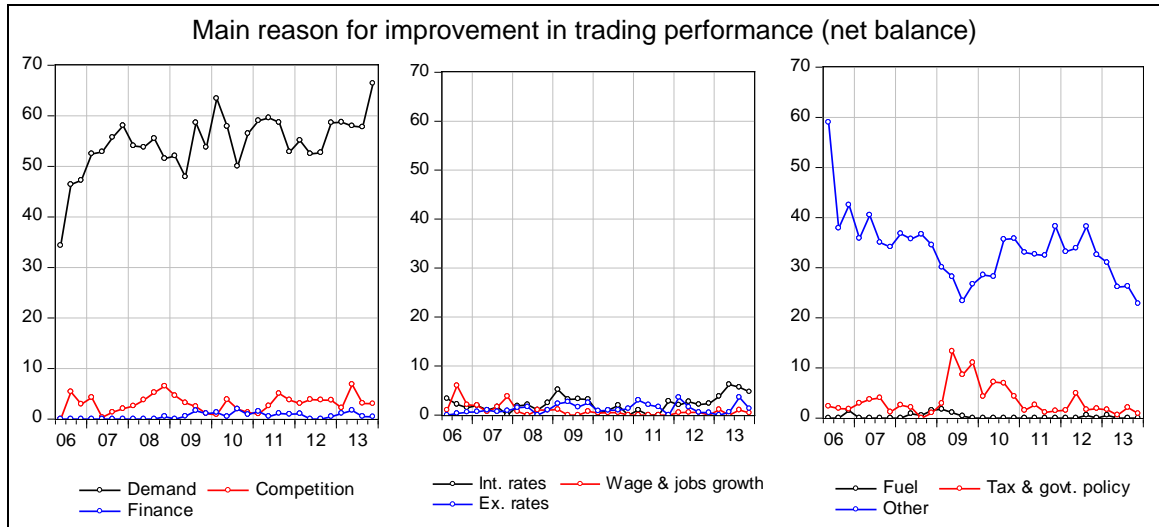
Lack of demand expected to constrain profitability the most; taxation & government policy less important



In the December quarter, a lack of demand remained the number one factor expected to constrain profitability over the next 12 months. This showed little change from the previous quarter, despite the apparent improvement in trading conditions and orders in the December quarter. This suggests that firms still have some reservations about the demand outlook, which might be expected to continue weighing on hiring and investment intentions – although our survey (surprisingly) suggests that this has not been the case, with both employment and capex expectations over the next 12 months picking up. The proportion of firms concerned about the impact of changes to tax policy is elevated, but dipped in the quarter, consistent with proposed changes to the carbon and mining taxes. More firms were worried about wage costs in the quarter, which is an unexpected finding considering the weakness of the labour market, which we are expecting to persist.

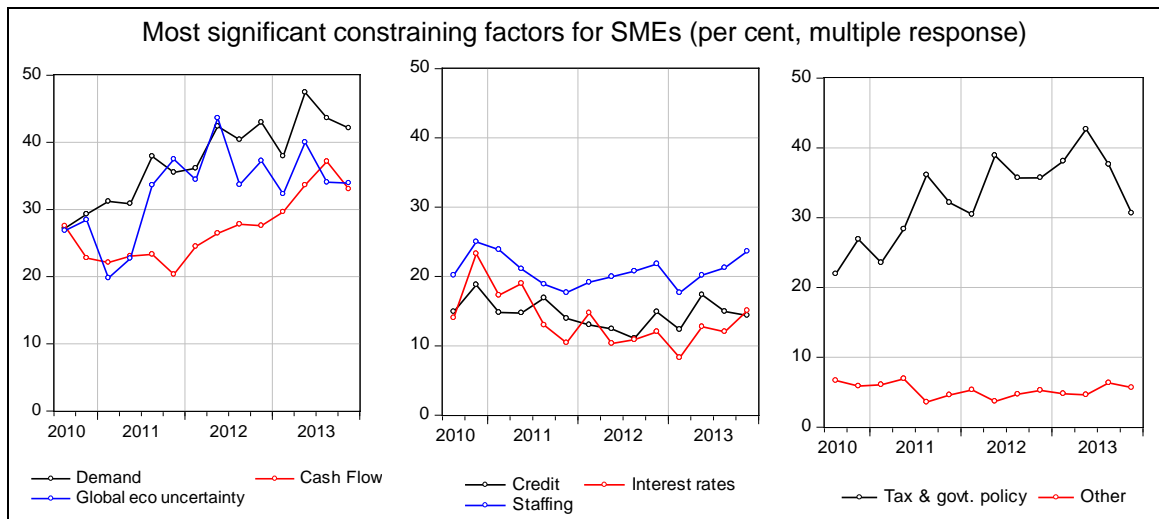
Analysis (cont.)

Demand was the primary driver behind the improvement in trading performance – exchange rate and interest rates apparently very little help



Trading performance jumped in the December quarter, with SMEs reporting that stronger demand was the sole reason behind the improvement. “Other” reasons as a contributing factor to improved trading remained reasonably significant – largely reflecting seasonal and company specific factors – but have been steadily declining for a number of quarters. Access to finance, fuel costs, wage & jobs growth and tax & government policy appear to have provided very little support to trading performance in the quarter.

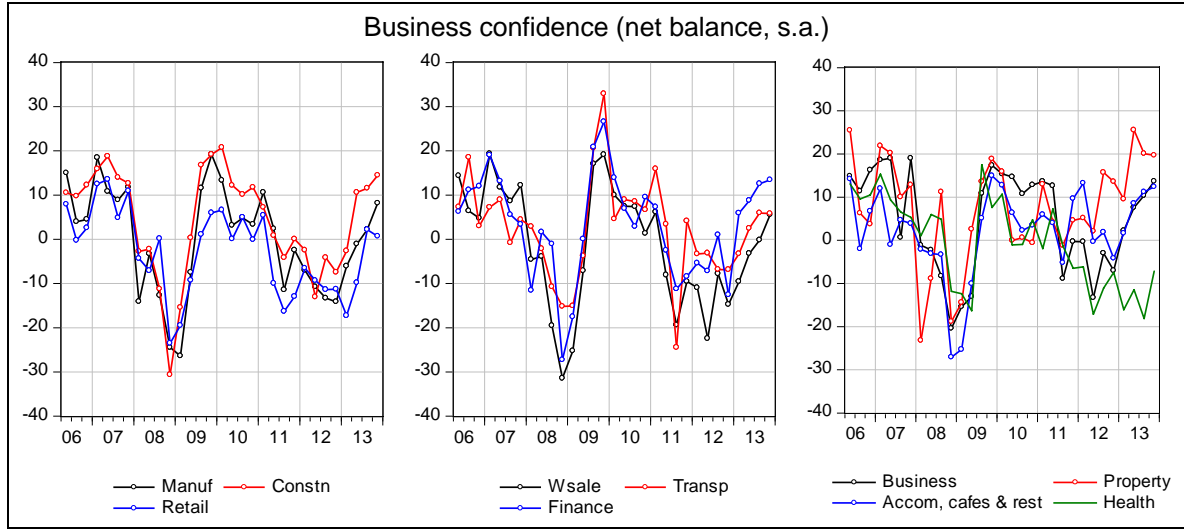
SMEs increasingly constrained by staffing. Cash flows eased back, but remain high, as did government policy/taxes



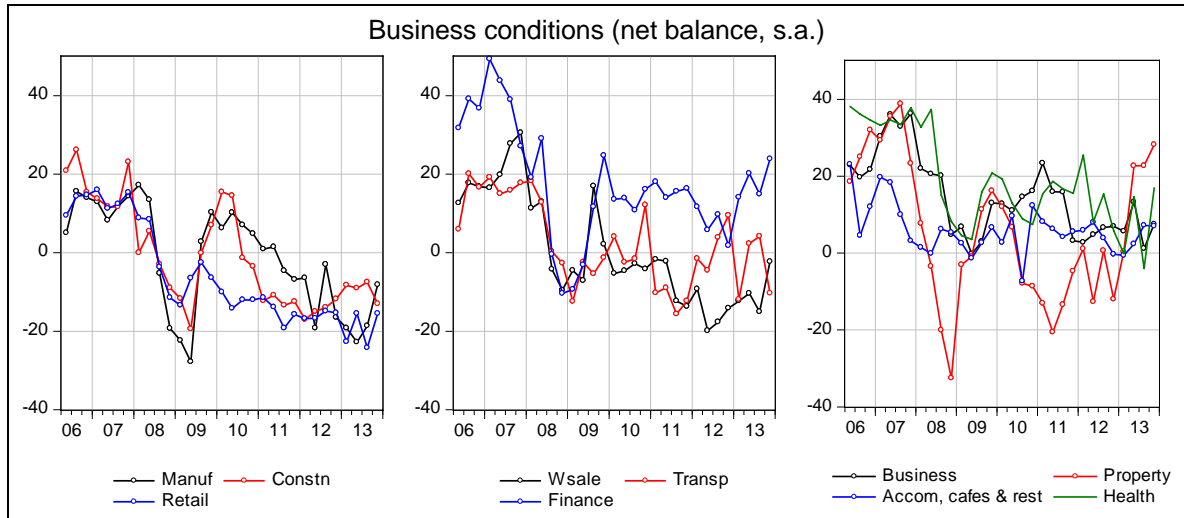
The ability of SMEs to make longer term decisions became increasingly constrained by staffing problems, although demand, cash flows, global economic uncertainty and government tax/policy all remain more significant – although each of these generally become less significant in the quarter. It is possible that the change in government is still helping alleviate SME concerns about tax & government policies, while improved trading conditions are helping the demand outlook. Firms were a little more constrained by interest rates (and less constrained by credit), but its significance has been limited by lower interest rates and better performing financial markets through 2013.

Industry analysis

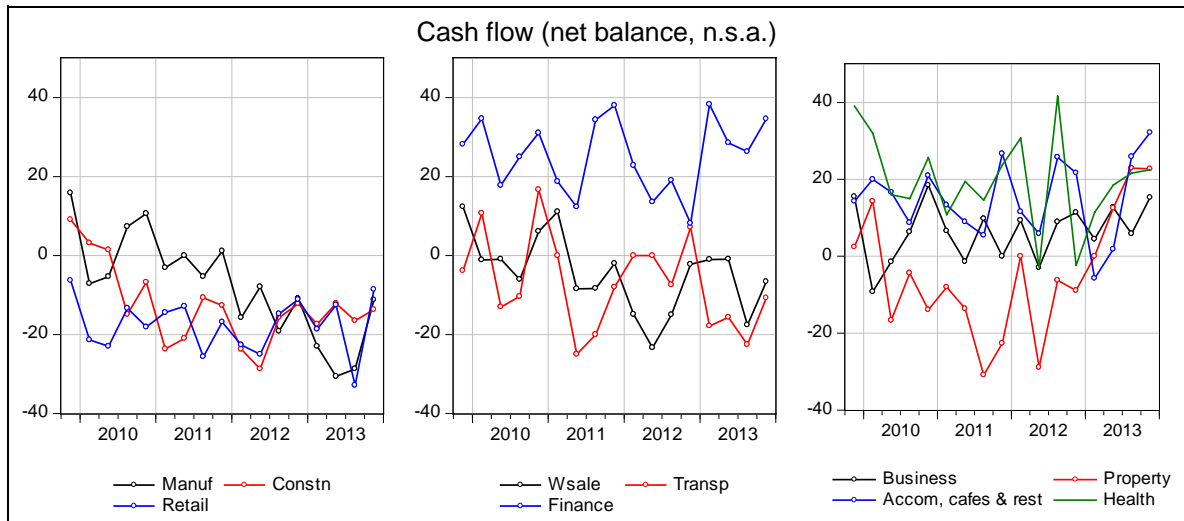
**Property & professional services most optimistic;
health services very pessimistic**



Weaker conditions for construction and trans, offset by rises elsewhere

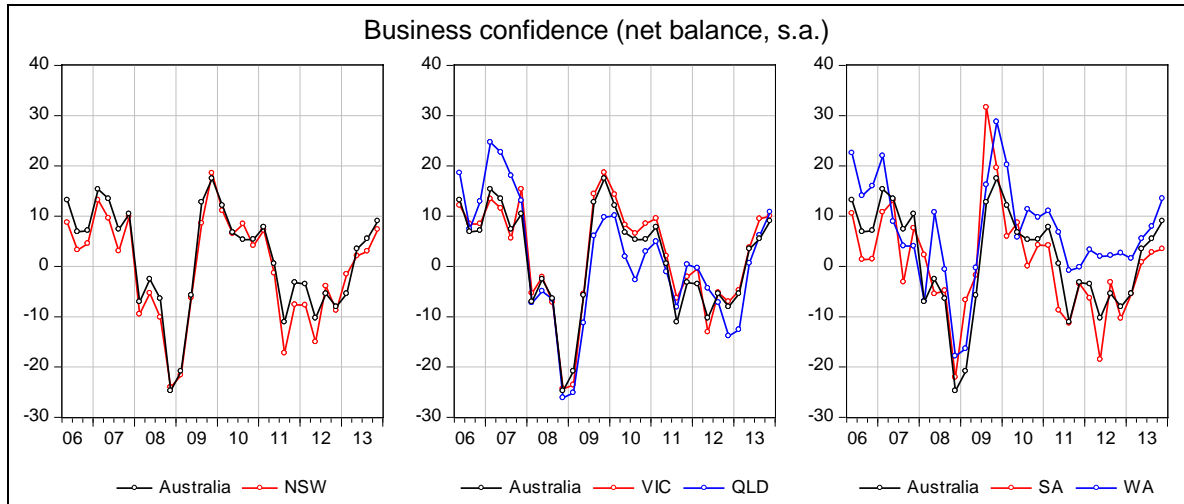


Cash flows improved largely across the board following reports of very poor cash flow in some industries last quarter

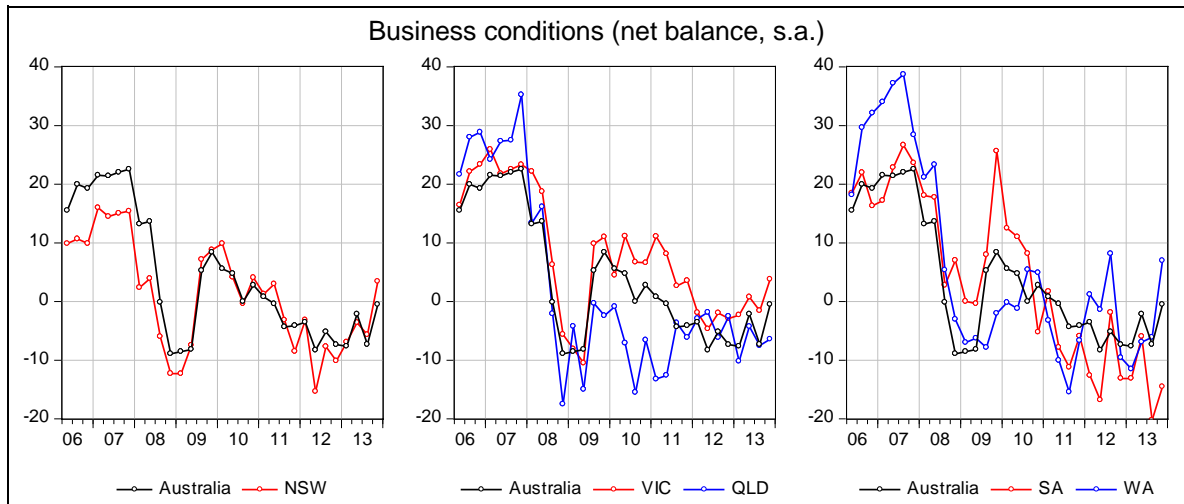


State analysis

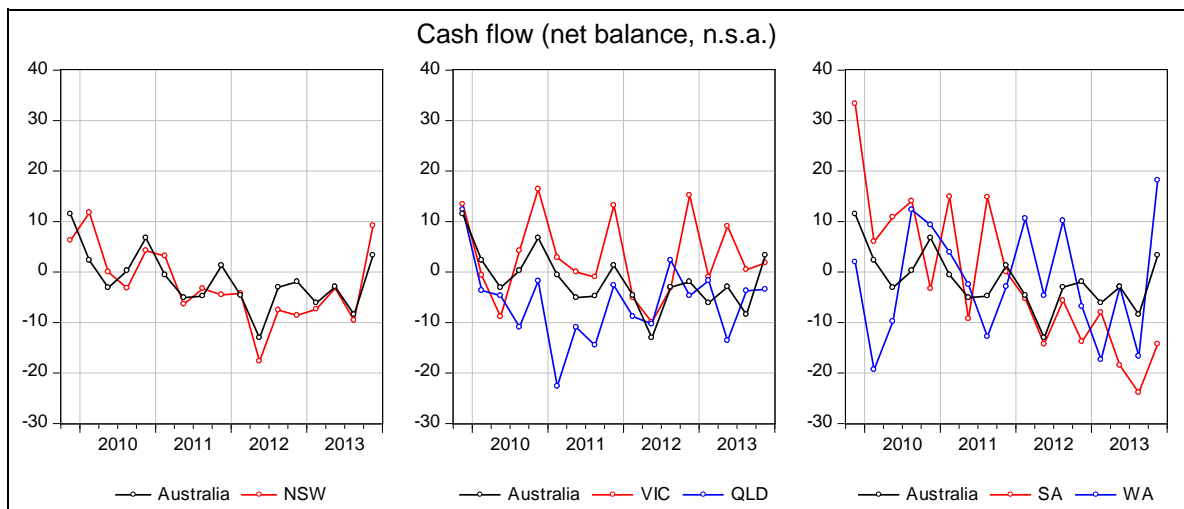
Business confidence up across all states; level of confidence trailing for South Australia



Conditions rise across all states; still very weak in WA and Qld

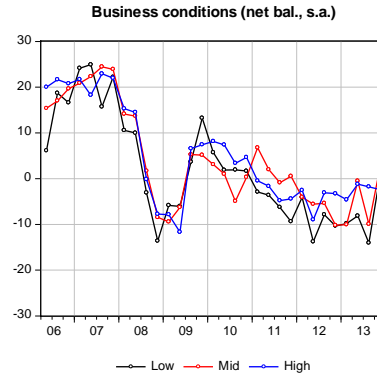
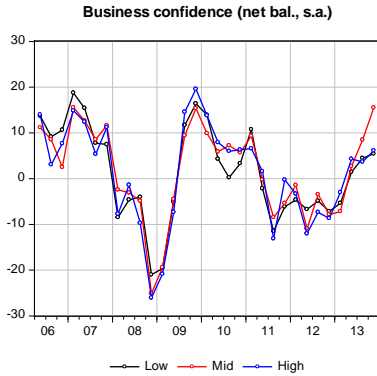


Cash flows are strongest in Western Australia and weakest in South Australia

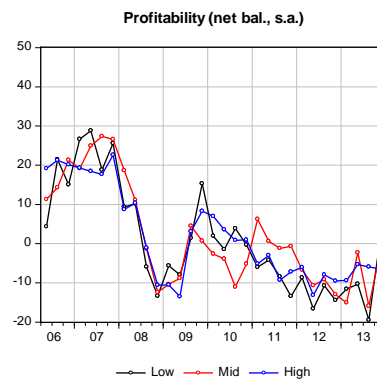
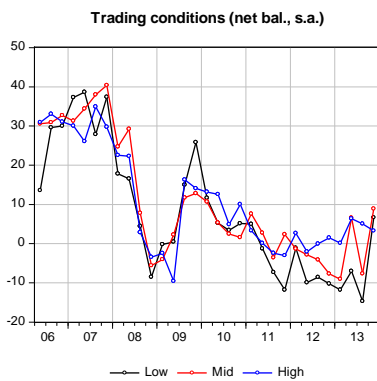


Firm size analysis

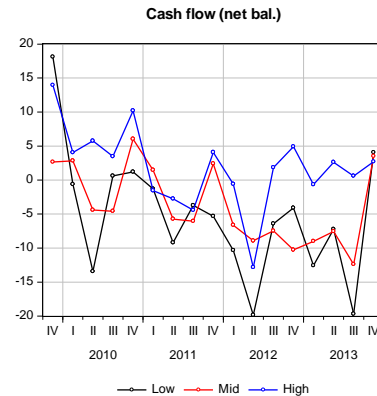
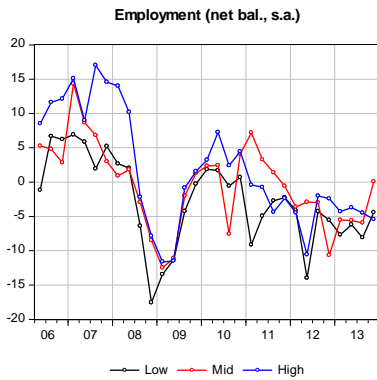
SMEs more confident but conditions still difficult



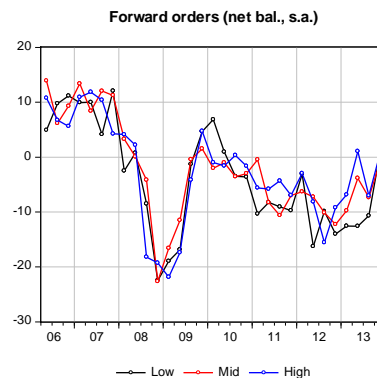
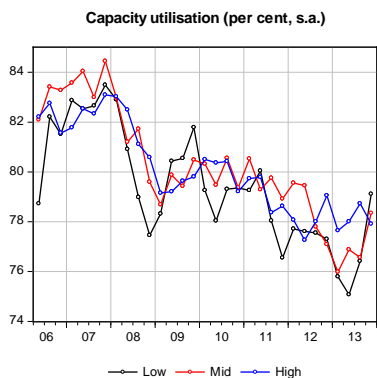
SME conditions consistent across firm size; still soft



Cash flows recover from sharp deterioration in September quarter



Capacity utilisation rises for mid-tier and low-tier firms; forward orders better, but still soft



Macroeconomic, Industry & Markets Research

Australia

Alan Oster	Group Chief Economist	+ (61 3) 8634 2927
Jacqui Brand	Personal Assistant	+ (61 3) 8634 2181
Rob Brooker	Head of Australian Economics & Commodities	+ (61 3) 8634 1663
James Glenn	Senior Economist – Australia & Commodities	+ (61 3) 9208 8129
Vyanne Lai	Economist – Agribusiness	+ (61 3) 8634 0198
Karla Bulauan	Economist – Australia & Commodities	+ (61 3) 8641 4028
Dean Pearson	Head of Industry Analysis	+ (61 3) 8634 2331
Robert De Iure	Senior Economist – Property	+ (61 3) 8634 4611
Brien McDonald	Economist – Industry Analysis & Risk Metrics	+ (61 3) 8634 3837
Amy Li	Economist – Industry Analysis	+ (61 3) 8634 1563
Tom Taylor	Head of International Economics	+ (61 3) 8634 1883
Tony Kelly	Senior Economist – International	+ (61 3) 9208 5049
Gerard Burg	Senior Economist – Asia	+ (61 3) 8634 2788
John Sharma	Economist – Sovereign Risk	+ (61 3) 8634 4514

Global Markets Research

Peter Jolly	Global Head of Research	+ (61 2) 9237 1406
Robert Henderson	Chief Economist Markets - Australia	+ (61 2) 9237 1836
Spiros Papadopoulos	Senior Economist – Markets	+ (61 3) 8641 0978
David de Garis	Senior Economist – Markets	+ (61 3) 8641 3045

New Zealand

Stephen Toplis	Head of Research, NZ	+ (64 4) 474 6905
Craig Ebert	Senior Economist, NZ	+ (64 4) 474 6799
Doug Steel	Markets Economist, NZ	+ (64 4) 474 6923

London

Nick Parsons	Head of Research, UK/Europe & Global Head of FX Strategy	+ (44 20) 7710 2993
Tom Vosa	Head of Market Economics – UK/Europe	+ (44 20) 7710 1573
Gavin Friend	Markets Strategist – UK/Europe	+ (44 20) 7710 2155

	Foreign Exchange	Fixed Interest/Derivatives
Sydney	+800 9295 1100	+ (61 2) 9295 1166
Melbourne	+800 842 3301	+ (61 3) 9277 3321
Wellington	+800 64 642 222	+800 64 644 644
London	+800 747 4615	+ (44 20) 7796 4761
New York	+1 800 125 602	+1877 377 5480
Singapore	+ (65) 338 0019	+ (65) 338 1789

DISCLAIMER: "[While care has been taken in preparing this material,] National Australia Bank Limited (ABN 12 004 044 937) does not warrant or represent that the information, recommendations, opinions or conclusions contained in this document ("Information") are accurate, reliable, complete or current. The Information has been prepared for dissemination to professional investors for information purposes only and any statements as to past performance do not represent future performance. The Information does not purport to contain all matters relevant to any particular investment or financial instrument and all statements as to future matters are not guaranteed to be accurate. In all cases, anyone proposing to rely on or use the Information should independently verify and check the accuracy, completeness, reliability and suitability of the Information and should obtain independent and specific advice from appropriate professionals or experts.

To the extent permissible by law, the National shall not be liable for any errors, omissions, defects or misrepresentations in the Information or for any loss or damage suffered by persons who use or rely on such Information (including by reasons of negligence, negligent misstatement or otherwise). If any law prohibits the exclusion of such liability, the National limits its liability to the re-supply of the Information, provided that such limitation is permitted by law and is fair and reasonable. The National, its affiliates and employees may hold a position or act as a price maker in the financial instruments of any issuer discussed within this document or act as an underwriter, placement agent, adviser or lender to such issuer."

UK DISCLAIMER: If this document is distributed in the United Kingdom, such distribution is by National Australia Bank Limited, 88 Wood Street, London EC2V 7QQ. Registered in England BR1924. Head Office: 800 Bourke Street, Docklands, Victoria, 3008. Incorporated with limited liability in the State of Victoria, Australia. Authorised and regulated in the UK by the Financial Services Authority.

U.S. DISCLAIMER: If this document is distributed in the United States, such distribution is by nabSecurities, LLC. This document is not intended as an offer or solicitation for the purchase or sale of any securities, financial instrument or product or to provide financial services. It is not the intention of nabSecurities to create legal relations on the basis of information provided herein.

NEW ZEALAND DISCLAIMER: This publication has been provided for general information only. Although every effort has been made to ensure this publication is accurate the contents should not be relied upon or used as a basis for entering into any products described in this publication. To the extent that any information or recommendations in this publication constitute financial advice, they do not take into account any person's particular financial situation or goals. Bank of New Zealand strongly recommends readers seek independent legal/financial advice prior to acting in relation to any of the matters discussed in this publication. Neither Bank of New Zealand nor any person involved in this publication accepts any liability for any loss or damage whatsoever may directly or indirectly result from any advice, opinion, information, representation or omission, whether negligent or otherwise, contained in this publication. National Australia Bank Limited is not a registered bank in New Zealand.

JAPAN DISCLAIMER: National Australia Bank Ltd. has no license of securities-related business in Japan. Therefore, this document is only for your information purpose and is not intended as an offer or solicitation for the purchase or sale of the securities described herein or for any other action.